



**68th USTA Boys' 18 & 16
National Championships**

The Red Book

Tournament Information 2010

**Mark Riley • Tournament Director
Darrell Davies • Referee**

www.ustaboys.com

Table of Contents

Letters of Welcome.....	1
Registration	2
Phone numbers	2
General Information.....	3-4
Medical Information	4-5
Tournament Rules and Information	6-7
Kalamazoo Map.....	8-9
Tournament Schedule.....	10-11
Maps to WMU Sorensen Courts & Picnic.....	12
Special Activities.....	13-14
Rain Plan Information, Nats Shuttle Van & Miscellaneous Information	15
Notes	16
Distinguished Sponsors & Corporate Patrons	17

Welcome!

As the Tournament Director, I extend a warm welcome on behalf of Kalamazoo College, Western Michigan University, and the nine hundred members of this year's Tournament Committees. We hope your visit to Kalamazoo will be a rewarding and enjoyable experience.

Congratulations on being one of the top tennis players in your age division in the United States. You have worked hard to earn the right to play in the USTA National Championships, and you deserve to have a tournament conducted for you in a professional manner. We plan to conduct a tournament that will be fair to all competitors. We hope you will conduct yourself in a professional manner, adhering to proper and courteous standards of decorum. Have fun, play hard, and good luck to each of you.

Mark Riley • Tournament Director

A WORD FROM THE REFEREE ... If a player is accompanied to these Championships by a coach, professional, parent or other relative, then the conduct of that companion is of vital importance. I expect from all such persons the same high level of sportsmanship that I expect from the players. There should be absolutely no coaching of any kind during a match, except during designated rest periods or suspensions of play. In the 16s Division, a 10-minute rest period is mandatory before the third set.

If any coach, professional or parent observes anything which, after careful thought, disturbs you, then take it up at once with me or one of the Deputy Referees. Please be assured that we will use mature judgment in handling all situations and will attempt, above all, to be fair and correct in every decision we make insofar as it is humanly possible.

Darrell Davies • Referee

Registration

Contestant Registration ... All contestants must register in the lobby of the Markin Racquet Center before they can play in the tournament. The Registration Center hours are shown on the schedule (pages 8-9). Each contestant will be issued a Tournament Badge which he must present to: (1) register for doubles, (2) sign up for Stadium practice courts before the tournament, and (3) gain admittance during the tournament.

Doubles Registration ... Players are urged to sign up for doubles when they complete their tournament registration. Each player is responsible for finding his own doubles partner. The doubles draw officials will do no pairing of players. Teams entering doubles are categorized in three priorities: **Priority 1:** A team consisting of players who are in the Singles tournament or are National Open Doubles Qualifiers; **Priority 2:** A team consisting of 1 player in Singles and 1 not in Singles; **Priority 3:** A team consisting of 2 players not in Singles. *Priority 1 teams are guaranteed in the Doubles Draw; Priority 3, from past experience, have little chance of getting in the Draw.* **Deadline for 18 doubles entries is Thursday, August 5, at 5:00 pm EDT and deadline for 16 doubles entries is Friday, August 6, at 4:00 pm EDT.**

Parent and Coach Registration ... Parents and coaches are encouraged to register at the Hospitality table in the Markin Racquet Center between noon-9:00 pm Thursday, August 5, or between 8:00 am-7:00 pm Friday, August 6. Registration will also be open from 7:00 am-noon on Saturday, August 7. The Tournament Committee will provide up to 5 guest passes (which includes the Exhibition) to the player's parents, siblings, and/or personal coach. Additional daily and/or weekly passes are available for purchase at the Ticket Booth.

Phone Numbers

Tournament Office(269) 337-7343
Radisson Plaza Hotel & Suites(269) 343-3333
WMU West Hills Athletic Club(269) 387-0410
YMCA-Kalamazoo Tennis House(269) 349-5928

Beginning noon Thursday, August 5:

Registration Center(269) 337-7083
Pro Shop, General Information(269) 337-7339

Beginning 8:00 am Friday, August 6:

Stowe Tournament Officials(269) 337-7340
Press 1 (Match Scores)(269) 337-7345
Press 2 (Match Scores)(269) 337-7346
Rain Hotline.....(269) 337-7079

General Information

Racket Stringing ... Racket stringing is available under the Prince Tent (for Prince players) and under the Tennis Connection Tent for all other brands. Both tents are located in the Stowe Stadium parking lot.

Practice Courts ... Practice times will be scheduled for the Stowe Stadium courts beginning at noon on Wednesday, August 4. Times are as follows: Wednesday, August 4 Noon - 6 pm and Thursday, August 5 from 8 am to 6 pm. **Reservations must be made in person at the Tower on a first come first served basis. One player alone may not reserve a court; both players who wish to practice together must sign in together. Practice time blocks are for one hour per day.** If vacant courts are available they will be assigned on a standby basis, first come first served. Coaches may hit with a player, but will be asked to share a court if needed. In case of rain, Stowe Stadium reservations are cancelled. During the tournament week, the indoor courts at Markin are available for practice purposes, except in the case of rain. Players with scheduled matches will be given priority. Also the YMCAs in Kalamazoo and Portage are available for use by players at no charge on a stand-by basis with tournament ID, or may be reserved for a fee. Parents may use the YMCA health club facilities at no charge with tournament ID.

Additional practice sites include the outdoor courts at: Kalamazoo Christian, Kalamazoo Valley Community College, Kalamazoo Central, Kalamazoo Loy Norrix, Portage Northern, Portage Central, Stroud Park, Markin Glen and WMU after 5:00 pm (if scheduled matches are still in progress check with Court Assignment Personnel at WMU Tournament Desk). See map (pages 6-7) for locations.

Transportation ... Players staying at the Radisson Plaza Hotel & Suites will be provided transportation to and from the tennis courts. Players not staying at the Radisson Plaza Hotel & Suites must provide their own transportation to the courts and the airport for outgoing flights; however, should there be a problem ask for help at the Tower.

General Information (continued)

Pro Shop ... Located under the tent in Stowe Stadium, the Pro Shop is tournament headquarters for:

**Kalamazoo's World-Famous Blueberries & Cream
Fresh Fruit • Frozen Yogurt
Ample Pantry
Sandwiches, Salads, Muffins & Cookies
Pepsi products: Juices, Water & Sports Drinks
Domino's Pizza
Specialty Bagels • Hot Coffee, Tea & Hot Chocolate
Programs & Draw sheets
Wilson Tennis Balls
T-Shirts, Tennis Clothing & Tournament Gift Items**

WMU Courts ... E.M.A. Enterprises will provide food, drink & snacks for purchase.

Medical Information

The prescribed USTA procedures for extreme heat, lightning, and emergencies will be followed and can be found in the publication "The Friend at Court" (pages 230-234).

Medical Services ... Trainers and/or doctors will provide continual medical coverage throughout the entire tournament and will be on duty an hour before the first match until the finish of the last match each day. At Stowe Stadium, trainers are located at court level or in the stands adjacent to the Tower and will call for a tournament doctor if necessary. Trainers will be near the tournament desk at WMU. In case of an emergency, any Tower official can help you contact a tournament doctor. **If you need to withdraw from the tournament for medical reasons, you must come to the Tower to have the Official Referee sign your withdrawal form. Failure to do so will result in suspension points.**

Extreme Heat Policy ... When conditions dictate, additional rest periods may be used for 18 division matches according to the Official USTA Extreme Heat Protocol found within "Friend at Court" (page 234)

Medical Information (continued)

Notes from Athletic Trainers ... As many of you are aware, it can get hot and humid here in August. An athlete can lose approximately 3/4 of a gallon of fluid per hour of exercise. In order to prevent dehydration/heat illness and maintain optimum performance levels, replacing that fluid is imperative. Below are some guidelines and tips that you can follow to help you stay hydrated and stay “in the game”. Should you have any questions or concerns, stop by the Athletic Training Room at court level of the Tower at Stowe Stadium.

Effects of Dehydration

- 1% to 2% of body weight decrease can hinder physiological function which negatively affects performance.
- 3% and above of body weight decrease can further negatively affect performance and increase your risk of exertional heat illness (heat cramps, heat exhaustion and heat stroke).

Warning Signs of Dehydration

- Thirst • Muscle Cramps • Fatigue • Loss of Performance
- Vomiting • Irritability

Preventing Dehydration/Heat Illness

Before Exercise:

Drink at least 17-20 oz. of fluid 2-3 hours prior to activity.
Drink 7-10 oz. of fluid 20 minutes prior to activity.

During Exercise:

Drink 7-10 oz. of fluid every 10-15 minutes.
If activity lasts longer than 45 minutes, fluid replacement should include a sports drink.

After Exercise:

Drink at least 20 oz. of fluid per pound of weight loss within 2 hours. The fluid should contain water, carbohydrates and electrolytes.

Tournament Rules & Information

Contestant Meeting & “Jr. Tennis-Pathway to College or Pro Tennis” panel ... This is a **mandatory meeting** for all contestants. Parents, coaches and guests are welcome to attend.

Players: if this is your fourth, fifth or sixth year playing in Kalamazoo please be at Stowe Stadium Court 3 at 6:45 pm Friday (before the Exhibition) for a group photo.

18s: Thursday, August 5 - 7:00 pm at 103 Dewing Hall*

** Dewing Hall located on Academy St., 2 blocks west of Markin Tennis Center and across street from the library.*

16s: Friday, August 6 - 4:00 pm on the grass across from the Markin Racquet Center (In case of rain, meeting will be held at Dalton Theatre*)

**Dalton Theatre is located in Light Fine Arts building on Academy St., 2 blocks west of Markin Tennis Center on the same side of the street.*

Match Schedule ...

Next day match times will be posted on the Official Scoreboard at Stowe Stadium by approximately 5:00 pm the evening before.

S = Stowe courts, W = WMU courts (see pp 6-7 & 11). Please check in with the appropriate Tournament Desk at least fifteen (15) minutes before your scheduled match.

Match Play ...

- **Main Draw Singles** (including playoff for 3rd & 4th place) Best of 3 tiebreak sets, except the Boys' 18 final will be the best of 5 tiebreak sets.
- **Feed-In Championship** Best of 3 tiebreak sets with a 10-point match tiebreak in lieu of a 3rd set.
- **Doubles Matches** Best of 3 tiebreak sets will be used in the semifinal, final and playoff for 3rd place. All other doubles matches be best of 3 tiebreak sets with a 10-point match tiebreak in lieu of a 3rd set.

Tournament Rules & Information

(continued)

Officials ... Chair Umpires will be provided for all outdoor matches. Roving coverage may be necessary at indoor venues. A designated referee is present at all sites during play.

USTA Code of Conduct ... Tournament officials will enforce the Point Penalty system in accordance with the current edition of "Friend at Court" (pages 123-127).

Dress Code ... Appropriate tennis attire is required on court at all times - no obtrusive advertising or offensive graphics are permitted. No swimming or soccer shorts.

Tennis Balls ... Wilson US Open Extra Duty are the official tennis balls of the tournament. Three balls in play, new can for third sets.

Water ... Iced water is provided on each outdoor court. A drinking fountain is located between the Stowe Stadium restrooms and also near Court 1 at the WMU Sorensen Courts. Indoor courts may be required to share water sources.

Warm-ups ... A five-minute warm-up is allowed preceding matches. An extended re-warm up of up to 10 minutes will be allowed if a match in progress outdoors moves to an indoor venue.

Rest Periods ...

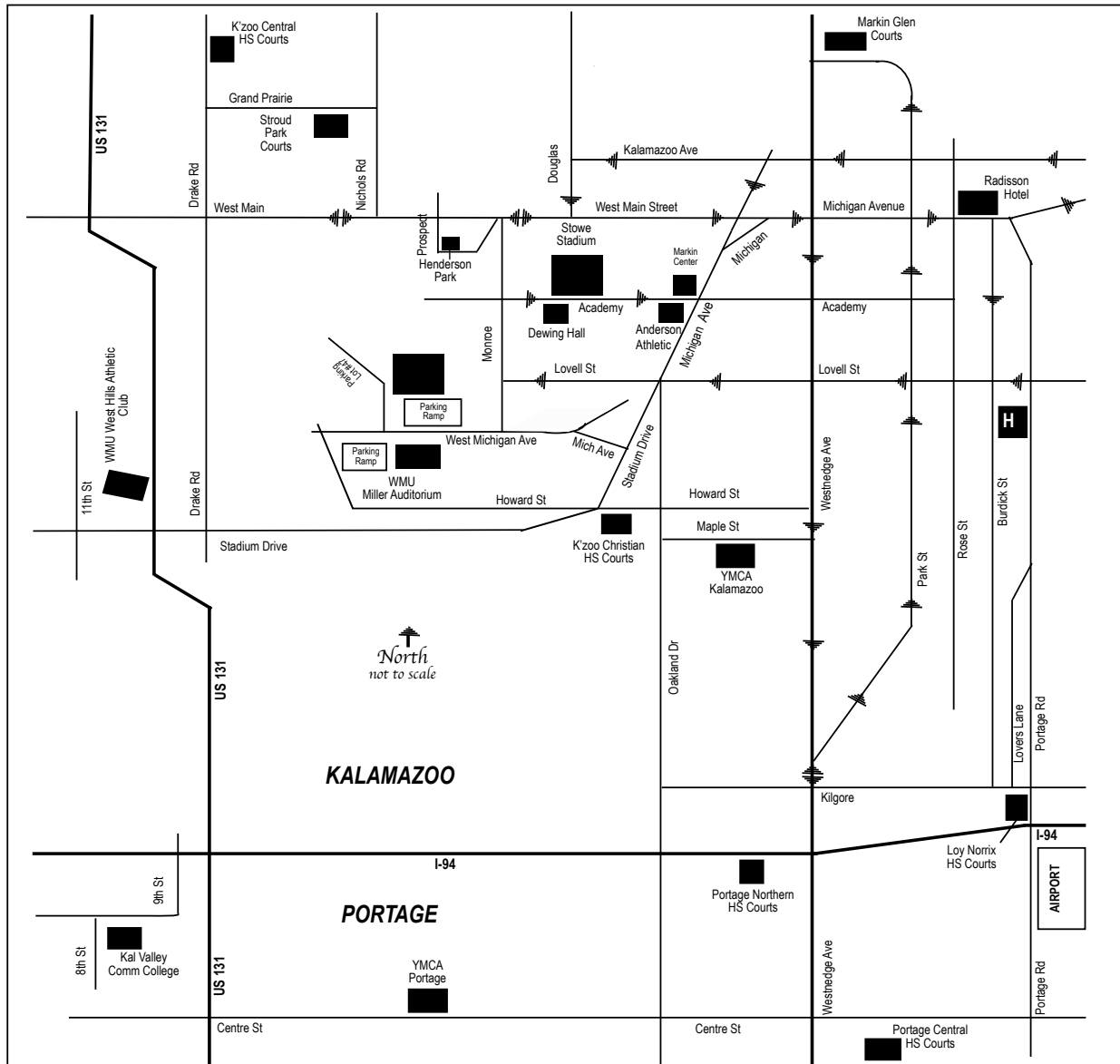
- **Boys 18** - No rest period during a best-of-three set match, a 10-minute rest period is mandatory following the third set in the final.
- **Boys 16** - A 10 minute rest period is mandatory before the third set.

Coaching ... Coaching is allowed only during designated rest periods and suspension of play due to weather.

Doubles ... Carefully check the tournament schedule for the location of doubles matches. Please note: there are playoffs for 3rd place in doubles.

Feed-in Championships ... After a main draw loss all contestants (including losing quarter finalists) are required to play in Feed-In Championships. Failure to do so will result in suspension points being assessed.

Kalamazoo Area Map



Rain Hotline269-337-7079
 Stowe Tower Officials269-337-7340
 Western Michigan University Tournament Desk269-998-6741
 Tournament Office (Markin Racquet Center)269-337-7343

2010 Tournament Schedule

(subject to change)

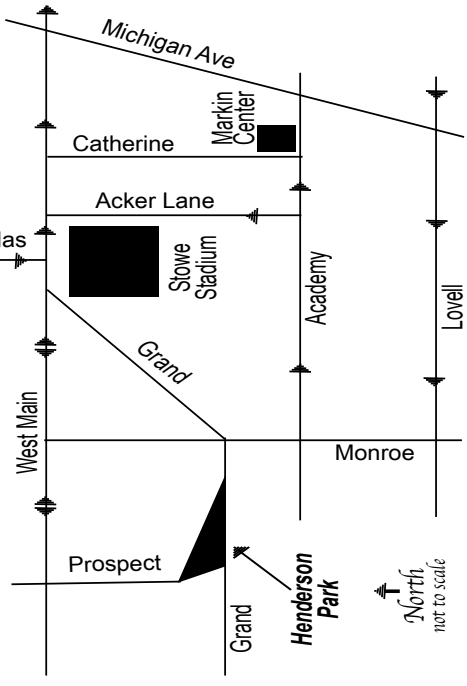
Event	Th 8/5	Fri 8/6	Sat 8/7	Sun 8/8	Mon 8/9
Boys' 18 Singles (8 Rounds)	Practice Courts	Round of 256	Round of 128		Round of 64
Boys' 18 Feed-In (11 Rounds)	Practice Courts		1st Rd All Byes	2nd Round	3rd Rd Qual
Boys' 18 Doubles (7 Rounds)	Practice Courts	Rounds 128 & 64		Round of 32	
Boys' 16 Singles (8 Rounds)	Practice Courts		Round of 256	Round of 128	Round of 64
Boys' 16 Feed-In (11 Rounds)	Practice Courts			1st Rd All Byes	2nd Round
Boys' 16 Doubles (7 Rounds)	Practice Courts		Rounds 128 & 64		Round of 32
Player Registration	Noon-9pm	8am-7pm	7am-Noon	Beginning Saturday pm	
Markin Hospitality	Noon-9pm	8am-7pm	7am-Noon	Beginning Saturday pm	
Info at Stowe	Noon-3pm	9am-3pm	9am-3pm	9am-3pm	9am-3pm
Info at Radisson	9am-3pm	9am-6pm	9am-Noon	Beginning Saturday pm	
Pro Shop	7am-9pm	7am-end	7am-7pm	7am-8pm	7am-7pm
Special Activities	College Coaches Expo 11-2 pm at the Radisson	16s Player Meeting/ Panel 4 pm Markin Center	Sanchez/Casal Acad Clinic Markin Ctr 11-Noon 3-4pm		Music on the Mall USTA Edition 5-7:30 Radisson (outside Zazios Patio) Free Food Sampling, Beverage Tent & Music <i>For all (Rain or Shine)</i>
		18s Player Meeting/ Panel 7:00 pm Dewing Hall (2 blocks west of Markin, across street from Upjohn Library)	Rx Optical Greenleaf Trust & Greenleaf Hospitality Exhibition 7 pm Stowe Stadium		
	Welcome Party Hosted by Discover Kalamazoo, WMU & USTA Nats at WMU Fountain 6:30-10:30 Parents & Coaches (Rain or Shine)				

2010 Tournament Schedule

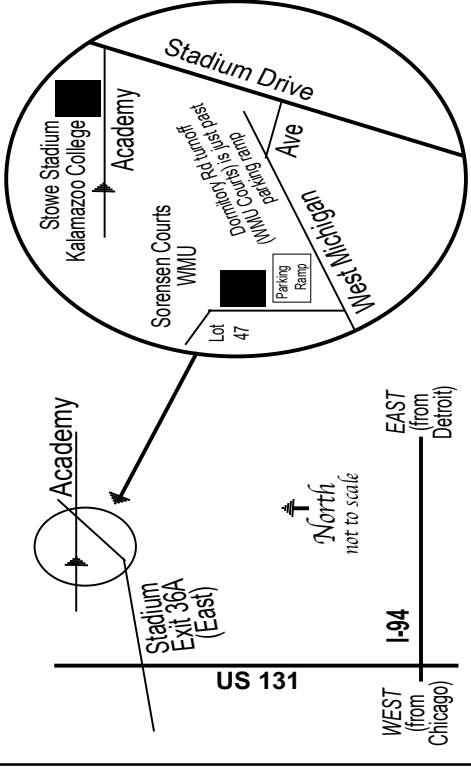
(subject to change)

Tue 8/10	Wed 8/11	Th 8/12	Fri 8/13	Sat 8/14	Sun 8/15
Round of 32	Round of 16	1/2 Round 8	1/2 Round 8	Semi Finals	Finals and 3rd Playoff
3rd Round	4th Rd Qual	4th Rd & 5th Rd Qual	5th Rd & Quarter Qual	Quarters and Semis	Finals
Round of 16	Round of 8		Semi Finals	Finals and 3rd Playoff	
Round of 32	Round of 16	1/2 Round 8	1/2 Round 8	Semi Finals	Finals and 3rd Playoff
3rd Round Qual	3rd Rd & 4th Rd Qual	4th Rd & 5th Rd Qual	5th Rd & Quarter Qual	Quarters and Semis	Finals
Round of 16		Round of 8	Semi Finals	Finals and 3rd Playoff	
contact Stowe Stadium Main Ticket Booth					
contact Stowe Stadium Main Ticket Booth					
9am-3pm					
contact Information Center at Stowe Stadium					
7am-7pm	7am-7pm	7:30-7:30	7:30am-7pm	9am-6pm	9am-5pm
Prince Junior Tennis Clinic (Ages 10-16) Free 1-2:30pm at Markin (Cancelled in case of rain)	Dinner at the Nats (Doubles Matches) 5 pm Stowe Stadium Box Dinners Available for Purchase To Reserve Dinners call 269-381-1631		Prince Junior Tennis Clinic (Kids 5-13) Free 5-6 pm at Stowe Stadium (Cancelled in case of rain)	16s Semi Finals 11 am • 18s Semi Finals 12:30 pm • 16s Doubles Finals 2:30 pm • 18s Doubles Finals 3:30 pm	3rd Place Feed-Ins 10 am • 16s Finals 11:30 pm • 18s Finals 1:30pm

Map to Neighborhood Picnic at Henderson Park



Map to Western Michigan University Sorensen Courts



Special Activities

- **Thursday, August 5 ...**

- College Coaches Expo**

- at The Radisson Plaza Hotel & Suites from 11:00 am - 2:00 pm.

- NOTE: Due to NCAA regulations, any high school senior interested in attending this reception may NOT register for the Nationals until AFTER the reception.*

- **Thursday, August 5 ...**

- Contestant Meeting and**

- “Junior Tennis - Pathway to College or Pro Tennis” panel**

- Mandatory meeting with 18s contestants** at Dewing Hall* at 7:00 pm. Parents invited.

- *Dewing Hall located on Academy St., 2 blocks west of Markin Tennis Center across Academy St. from the Kalamazoo College Upjohn Library.

- Note:** *If this is your fourth, fifth or sixth year playing in Kalamazoo please be at the Stowe Stadium Court 3 at 6:45 pm Friday (before the Exhibition) for a group photo.*

- **Friday, August 6 ...**

- Contestant Meeting and**

- “Junior Tennis - Pathway to College or Pro Tennis” panel**

- Mandatory meeting with 16s contestants** will be held on the grass plaza across from the Markin Racquet Center at 4 pm. (In case of rain, meeting will be held at Dalton Theatre). Parents invited.

- *Dalton Theatre is located in Light Fine Arts building on Academy St., 2 blocks west of Markin Tennis Center on the same side of the street.

- **Friday, August 6 ...**

- Rx Optical/Greenleaf Trust & Greenleaf Hospitality Exhibition**

- ... featuring Jan-Michael Gambill and Scoville Jenkins - Stowe Stadium at 7:00 pm.

- **Saturday, August 7 ...**

- Tennis Clinics**

- presented by* **Sanchez/Casal Academy**

- at Markin Tennis Center from 11am-Noon and again from 3-4pm. For Parents, Coaches and Players. In case of rain, the event is cancelled.

Special Activities

(continued)

- **Saturday, August 7 ...**

- Players Party - Pasta Buffet & Arcade**

- Pasta Bar, ping pong, air hockey, arcade games and Wii! 6:30-9:00 pm in the lower level of the Radisson Plaza Hotel.

- **Saturday, August 7 ...**

- USTA Boys' 18 & 16 National Championships *Welcome Party* hosted by Discover Kalamazoo, WMU & the USTA Nationals**

- ... at the Fountain area behind Miller Auditorium on the campus of WMU. 6:30-10:30 pm. (Food service until 10 pm). BBQ. For Sponsors, Corporate Patrons, Guests, Officials, Parents, Coaches and Volunteers. Casual Dress, rain or shine.

- **Monday, August 9 ...**

- Music on the Mall - USTA Edition**

- 5-7:30 pm on Kalamazoo Mall outside Zazios at the Radisson. Free food sampling, beverage tent and music. For all, rain or shine.

- **Tuesday, August 10 ...**

- Prince Junior Tennis Clinic**

- (ages 10-16) from 1-2:30 pm at Markin Tennis Center. Free. In case of rain, the event is cancelled.

- **Tuesday, August 10 ...**

- Neighborhood Picnic**

- sponsored by

- West Main Neighborhood Association and Prince Sports Group ...* for all contestants, their families, and their coaches at Henderson Park (park is within walking distance of Stowe Stadium - see Map to Neighborhood Picnic - p 11). Food will be served from 6:00-8:30 pm (rain or shine).

- **Wednesday, August 11 ...**

- Dinner at the Nats**

- (Doubles matches) 5 pm. Stowe Stadium Box Dinners Available for purchase. Reserve by 8/10. Call Jan Block at 269-381-1631.

- **Friday, August 13 ...**

- Prince Junior Tennis Clinic**

- (ages 5-13) from 5-6 pm at Stowe Stadium on Courts 6-11. Free. In case of rain, the event is cancelled.

Shuttle, Rain Plan & Miscellaneous

Nats Shuttle Van Service ... Tournament shuttles will run from Stowe, to WMU, and to the Radisson Plaza Hotel beginning at 8:00 am and running throughout the day until approximately 6:30 pm. The departure point is the bus stop on Acker Lane across from the entrance to Stowe Stadium. Parking around Stowe Stadium is limited. We urge you to take the shuttle.

Rain ... In the event that rain suspends play, players whose matches are affected are responsible for obtaining information from the tournament desk regarding the plans for continuation of interrupted matches and for scheduling upcoming matches. ***No player should leave the site without this information. Failure to be present at the reassigned time and place may result in default.*** The Tennis Committee is not responsible for locating players who fail to comply with the above instructions. Rain sites are Markin Racquet Center, the YMCA-Maple Street/Kalamazoo, YMCA- Portage and WMU/West Hills Athletic Club (map pages 6-7).

Website ... Visit www.ustaboys.com for the latest news, match times, rain information, scores and photos. Up-to-date information on schedules, college coach attendance, social events and player activities is also available.

Road Construction ... Note: There is significant road construction on South Westnedge Avenue at the I-94 interchanges as well as Solon Street between West Main and Howard Streets. Be aware of possible road construction.

Notes

The committee expresses its appreciation to the following businesses for their substantial interest and contributions

Distinguished Sponsors

AM-590 - FM 96.5 WKZO	Pepsi Beverages Company
BDO	Perrigo Company
Blue Cross Blue Shield of Michigan	Pfizer, Inc.
Borgess Health	Prince Sports, Inc.
Consort Display Group	Public Media Network
Digital Highway	Radisson Plaza Hotel & Suites
Discover Kalamazoo	Rose Street Advisors, LLC
Domino's Pizza	Rx Optical
Evenboer-Walton Realtors	Secant Technologies
Fabri-Kal	SignWriter
Gordon Food Service	Sodexo
Great Lakes Plastic & Hand Surgery	State Farm
Greenleaf Hospitality	Sabrina Pritchett-Evans, Agent
Greenleaf Trust	Stryker Corporation
Hammond Roto-Finish	Michael & Sharon Thompson
Hewlett-Packard	Treystar
Holiday Inn Kalamazoo West	Western Michigan University
JB Printing Company	William Blair & Company, LLC
Kalamazoo/Battle Creek International Airport	Wilson Sporting Goods Company
Kalamazoo College	Wiser Financial Group, The
Meijer	WMU West Hills Athletic Club
Miller Canfield	WWMT Channel 3
Miller-Davis Company	YMCA of Greater Kalamazoo
	Harold Zeigler Auto Group

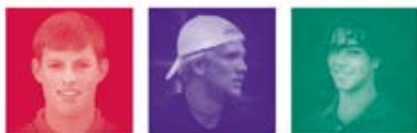
Corporate Patrons

A-1 Rent All, Inc.	Maxwell/Miller Communications
Access Medical, LLC	Michigan Commerce Bank
The Ample Pantry, Inc.	Millennium Restaurant Group
Bowers Manufacturing Co.	David Novak, DDS PC
Randall L. Brown & Associates PLC	NEMCO Brokerage, Inc.
Burnham & Flower Agency, Inc.	Optimum Health Chiropractic Center
Center for Business Innovation	PNC Bank
Cityscape	PPS & V Asset Management Consultants, Inc.
Cole Gavlas PC	Printlink Palmer Inc.
Diekema Hamann Architecture & Engineering	Prudential Preferred Realtors
Theodore Eckert Foundation	Residence Inn By Marriott
Epic Bistro	Jeffrey J. Riggs, DDS, P.C.
Fieldstone Grill	Mark Riley
Fifth Third Bank - Western Michigan	Sandhill Marketing
First National Bank	Schupan & Sons, Inc.
Flynn, Thiel, Boutell & Tanis, P.C.	E.M. Sergeant
Gordon Water Systems	SiegfriedCrandallPC
Greater Kalamazoo Lodging Association	Suburban Mechanical Company
Great Lakes Embroidery	Superior Business Solutions
Huntington Bank	The Surgical Group of Southwest Michigan
Kalamazoo Gazette	Tiffany's Gourmet Deli
Kingscott Associates, Inc.	Tower, Pinkster, Titus Associates
Kreis, Enderle, Hudgins & Borsos, P.C.	The Union
Lewis Reed & Allen, P.C.	UnitedHealthcare
Martell's Tavern	ZGH Design, Inc.
Martell's Tavern on the Green	



68th USTA Boys' 18 & 16 National Championships

2010 BOYS' 18 & 16 NATIONAL CHAMPIONSHIPS
KALAMAZOO, MICHIGAN • AUGUST 6 - 15
KALAMAZOO COLLEGE • WESTERN MICHIGAN UNIVERSITY • USTABOYS.COM



2010 EXHIBITION • Friday August 6, 2010 at 7:00 pm
Scoville Jenkins - 2004 USTA Boys' 18s Singles Champion
vs.

Jan-Michael Gambill - 2001 World Ranking #14

www.ustaboys.com